

PRIMARY STROKE CENTERS (PSC)
As of August 1, 2013

HOSPITAL NAME

Christ Medical Center (Advocate)
Illinois Masonic Medical Center (Advocate)
Lutheran General Hospital (Advocate)
Holy Cross Hospital
John H. Stroger, Jr. Hospital of Cook County
Little Company of Mary Hospital
Loyola University Medical Center
MacNeal Hospital (Vanguard)
Mercy Hospital and Medical Center
MetroSouth Medical Center
Mount Sinai Medical Center
Northwestern Memorial Hospital
Our Lady of the Resurrection Medical Center (Presence)
Resurrection Medical Center (Presence)
Rush University Medical Center
Saint Francis Hospital - Evanston (Presence)
Saint Joseph Hospital (Presence)
Saint Mary Medical Center (Presence)
Swedish Covenant Hospital
Trinity Hospital (Advocate)
University of Chicago Medical Center
University of Illinois Hospital and Health Sciences System
West Suburban Medical Center (Vanguard)

Certified Stroke Centers in Illinois

Current as of 11/25/2013

PSC=Primary Stroke Center

CSC=Comprehensive Stroke Center

Hospital	City	Certification (Org.)
Adventist GlenOaks Hospital	Glendale Heights	PSC (JC)
Adventist Hinsdale Hospital	Hinsdale	PSC (JC)
Adventist La Grange Memorial Hospital	La Grange	PSC (JC)
Advocate BroMenn Medical Center	Normal	PSC (DNV)
Advocate Christ Medical Center & Hope Children's Hosp.	Oak Lawn	PSC (JC)
Advocate Condell Medical Center	Libertyville	PSC (JC)
Advocate Good Samaritan Hospital	Downers Grove	PSC (DNV)
Advocate Good Shepherd Hospital	Barrington	PSC (DNV)
Advocate Illinois Masonic Medical Center	Chicago	PSC (JC)
Advocate Sherman Hospital	Elgin	PSC (JC)
Advocate South Suburban Hospital	Hazel Crest	PSC (DNV)
Advocate Trinity Hospital	Chicago	PSC (DNV)
Alexian Brothers Medical Center	Elk Grove Village	CSC (JC)
Alton Memorial Hospital	Alton	PSC (JC)
Blessing Hospital	Quincy	PSC (JC)
Centegra Hospital – McHenry (Northern Illinois Med. Ctr.)	McHenry	PSC (JC)
Centegra Hospital – Woodstock	Woodstock	PSC (JC)
Central DuPage Hospital	Winfield	CSC (JC)
Decatur Memorial Hospital	Decatur	PSC (JC)
Delnor Community Hospital	Geneva	PSC (JC)
Edward Health Services Corp. (Edward Hospital)	Naperville	PSC (JC)
Edward-Elmhurst Healthcare (Elmhurst Memorial Hosp.)	Elmhurst	PSC (JC)
Galesburg Cottage Hospital	Galesburg	PSC (JC)
Holy Cross Hospital	Chicago	PSC (HFAP)
Ingalls Memorial Hospital	Harvey	PSC (DNV)
John H. Stroger, Jr. Hospital of Cook County	Chicago	PSC (JC)
Little Company of Mary Hospital	Evergreen Park	PSC (JC)
Loyola University Medical Center	Maywood	PSC (JC)
MacNeal Hospital (Vanguard Health Systems of Illinois)	Berwyn	PSC (JC)
Memorial Hospital of Carbondale	Carbondale	PSC (JC)
Memorial Medical Center	Springfield	PSC (JC)
Memorial Medical Center	Woodstock	PSC (JC)
Mercy Hospital and Medical Center	Chicago	PSC (HFAP)
Methodist Medical Center of Illinois, The	Peoria	PSC (JC)
MetroSouth Medical Center	Blue Island	PSC (JC)
Mount Sinai Hospital Medical Center	Chicago	PSC (JC)
NorthShore University HealthSystem Evanston Hospital	Evanston	PSC (JC)
NorthShore University HealthSystem Glenbrook Hospital	Glenview	PSC (JC)
NorthShore University HealthSystem Highland Park	Highland Park	PSC (JC)
NorthShore University HealthSystem Skokie Hospital	Skokie	PSC (JC)
Northwest Community Hospital	Arlington Heights	PSC (JC)
Northwestern Lake Forest Hospital	Lake Forest	PSC (JC)
Northwestern Memorial Hospital	Chicago	PSC (JC)
OSF Saint Anthony Medical Center	Rockford	PSC (JC)
OSF Saint Francis Medical Center	Peoria	CSC (JC)
OSF St. Joseph Medical Center	Bloomington	PSC (JC)

Certified Stroke Centers in Illinois

Current as of 11/25/2013

PSC=Primary Stroke Center

CSC=Comprehensive Stroke Center

Presence Covenant Medical Center	Urbana	PSC (JC)
Presence Mercy Medical Center	Aurora	PSC (JC)
Presence Our Lady of the Resurrection Medical Center	Chicago	PSC (JC)
Presence Resurrection Medical Center	Chicago	PSC (JC)
Presence Saint Francis Hospital	Evanston	PSC (JC)
Presence Saint Joseph Hospital	Chicago	PSC (JC)
Presence Saint Joseph Hospital – Elgin	Elgin	PSC (JC)
Presence Saint Joseph Medical Center	Joliet	PSC (JC)
Presence Saints Mary and Elizabeth Medical Center	Chicago	PSC (JC)
Presence St. Mary's Hospital	Kankakee	PSC (JC)
Riverside Medical Center	Kankakee	PSC (DNV)
Rockford Memorial Hospital	Rockford	PSC (JC)
Rush Oak Park Hospital	Oak Park	PSC (JC)
Rush University Medical Center	Chicago	PSC (JC)
Rush-Copley Medical Center	Aurora	PSC (JC)
Saint Anthony's Health Center	Alton	PSC (JC)
Silver Cross Hospital	New Lenox	PSC (JC)
St. Alexius Medical Center	Hoffman Estates	PSC (JC)
St. John's Hospital	Springfield	PSC (JC)
St. Mary's Hospital	Decatur	PSC (JC)
Swedish American Hospital	Rockford	PSC (JC)
Swedish Covenant Hospital	Chicago	PSC (HFAP)
Trinity Medical Center	Rock Island	PSC (JC)
University of Chicago Medical Center	Chicago	CSC (JC)
University of Illinois Medical Center at Chicago	Chicago	PSC (JC)
Waukegan IL Hospital Company LLC	Waukegan	PSC (JC)
West Suburban Medical Center	Oak Park	PSC (JC)
Westlake Hospital	Melrose Park	PSC (JC)

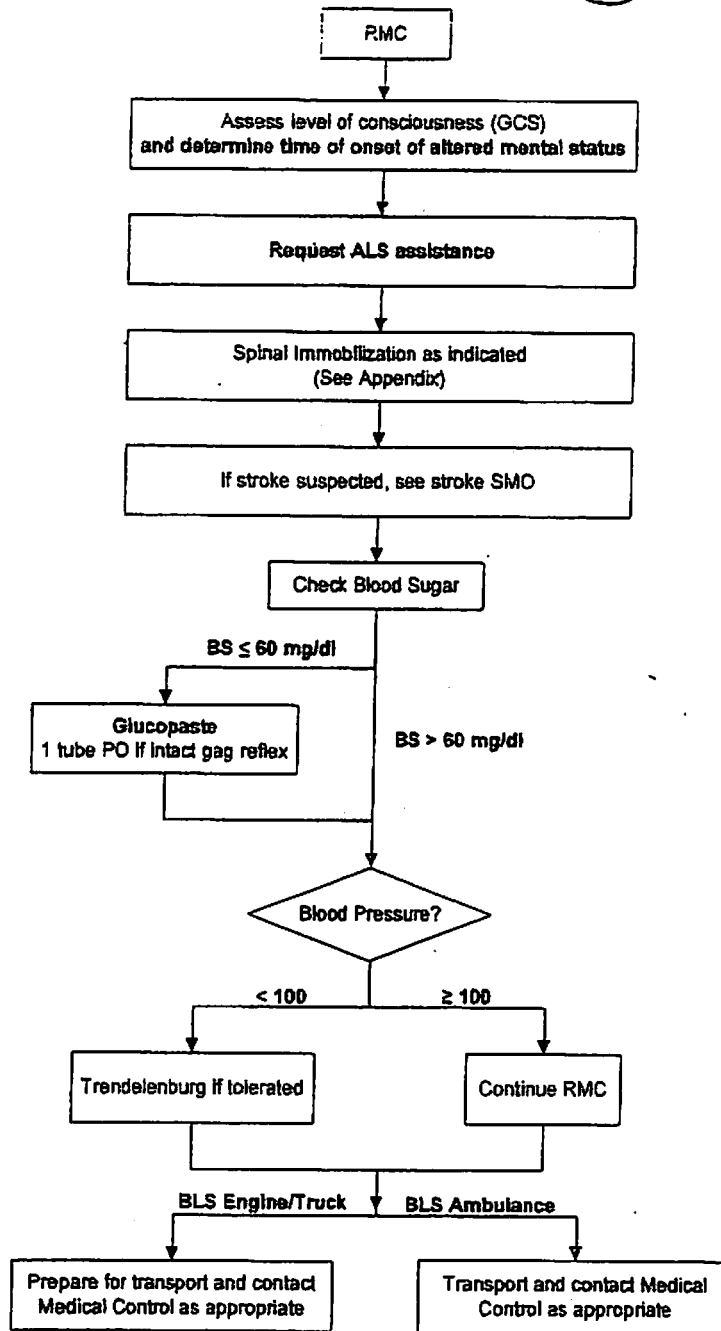
Sources:

The Joint Commission, www.qualitycheck.org

Healthcare Facilities Accreditation Program, www.hfpa.org

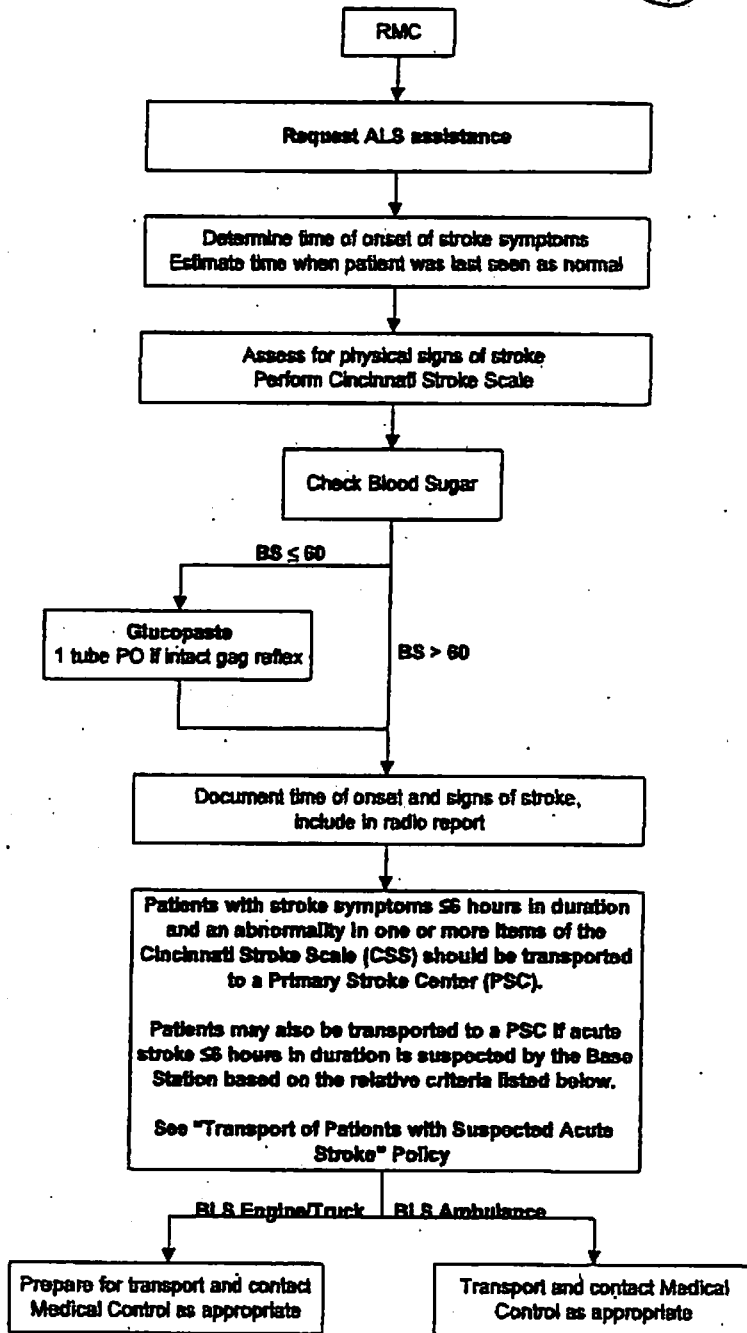
DNV Healthcare, www.dnvaccreditation.com

ALTERED MENTAL STATUS - BLS



Copyright 2009 Chicago EMS Medical Directors Consortium
 Written: 1/09 Replaces Decreased Level of Consciousness SMO
 Reviewed: 3/09; 2/10
 Revised: 3/09; 6/10
 MDC Approval: 4/7/09; 6/1/10
 IDPH Approval: 3/5/10; 11/24/10
 Implementation: 1/1/11; 3/1/11

SUSPECTED ACUTE STROKE - BLS



Relative Criteria

Patients with a negative or unattainable CSS may be transported to a PSC if acute stroke ≤ 6 hours in duration is suspected by the Base Station based on any of the following:

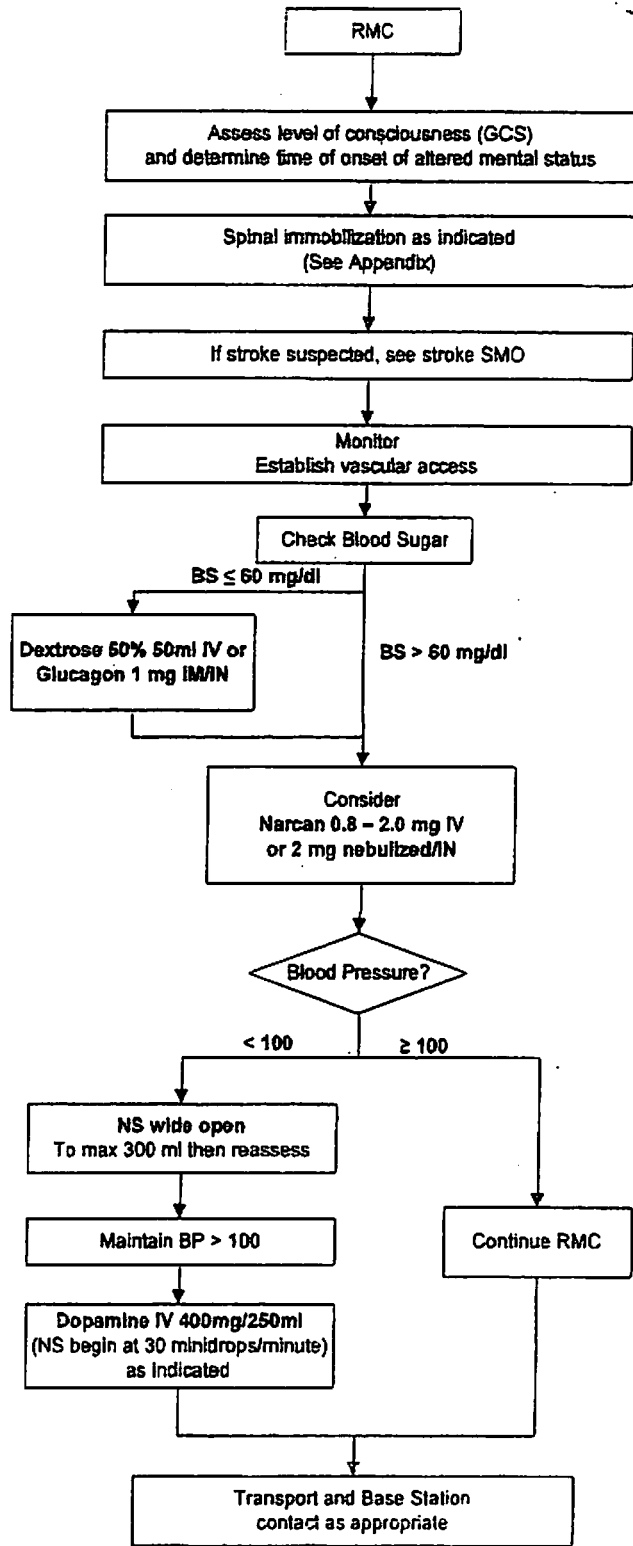
- Sudden and persistent alteration of consciousness
- Sudden onset severe headache (especially in association with vomiting +/- systolic BP > 200)
- Severe and sudden loss of balance

Cincinnati Stroke Scale (CSS) (for responsive patient):

1. **Facial droop** – have patient show teeth or smile
Abnormal = one side does not move as the other
2. **Arm Drift** – have patient close eyes and hold arms out for 10 seconds with palms up
Abnormal = one arm does not move or drifts down
3. **Abnormal speech** – have patient say, "You can't teach an old dog new tricks"
Abnormal = patient slurs words, uses wrong words or is unable to speak

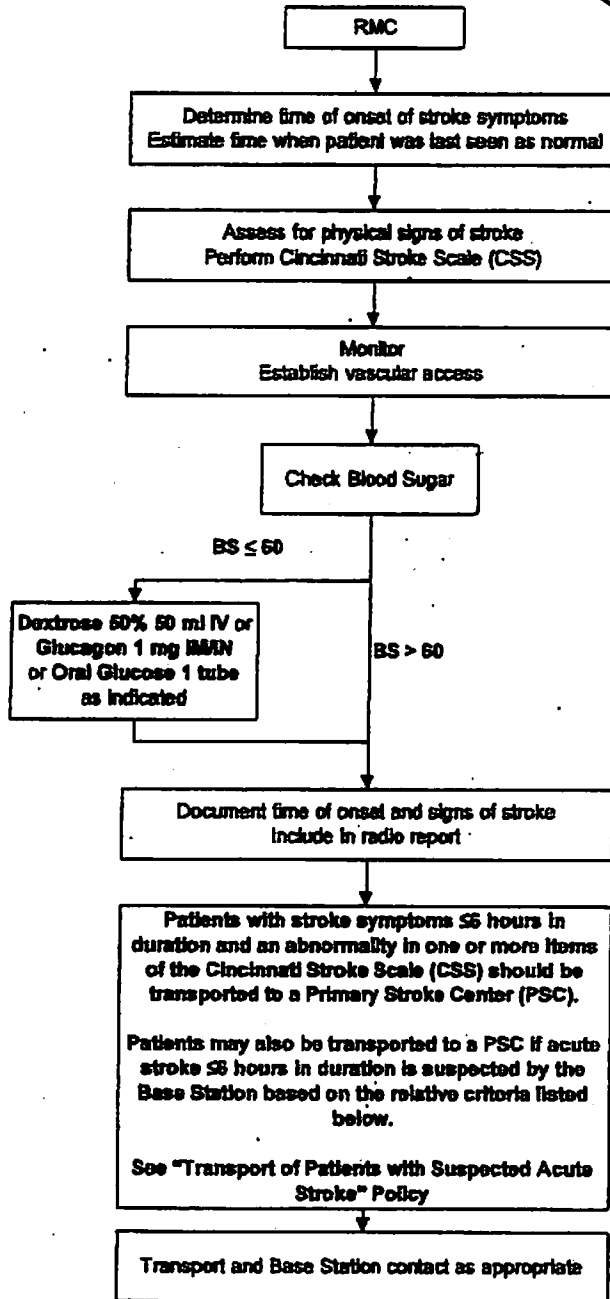
Positive CSS = One or more of the above items are abnormal

ALTERED MENTAL STATUS ALS



Copyright 2009 Chicago EMS Medical Directors Consortium
 Written: 7/88
 Reviewed: 12/85; 4/86; 5/04; 3/09; 1/10; 7/10
 Revised: 11/81; 1/82; 12/85; 5/89; 5/04; 3/09; 8/10; 7/10
 MDC Approval: 7/3/89; 10/3/91; 8/3/92; 1/4/98; 5/99; 06/04; 4/7/09; 8/1/10; 8/7/10
 IDPH Approval: 8/88; 12/3/91; 11/18/92; 2/20/96; Summer 99; 8/04; 7/8/09; 11/24/10
 Implementation: 8/88; 1/1/82; 3/1/93; 5/1/96; 8/1/99; 1/1/05; 1/1/10; 3/1/11

SUSPECTED ACUTE STROKE - ALS



Relative Criteria

Patients with a negative or unattainable CSS may be transported to a PSC if acute stroke ≤ 6 hours in duration is suspected by the Base Station based on any of the following:

- Sudden and persistent alteration of consciousness
- Sudden onset severe headache (especially in association with vomiting +/- systolic BP > 200)
- Severe and sudden loss of balance

Cincinnati Stroke Scale (CSS) (for responsive patient):

1. **Facial droop** – have patient show teeth or smile
Abnormal = one side does not move as the other
2. **Arm Drift** – have patient close eyes and hold arms out for 10 seconds with palms up
Abnormal = one arm does not move or drifts down
3. **Abnormal speech** – have patient say, "You can't teach an old dog new tricks"
Abnormal = patient sturs words, uses wrong words or is unable to speak

Positive CSS = One or more of the above items are abnormal

TRANSPORT OF PATIENTS WITH SUSPECTED ACUTE STROKE

- I. Patients with stroke symptoms ≤ 6 hours in duration and an abnormality in one of more items of the Cincinnati Stroke Scale (CSS) should be transported to a Primary Stroke Center (PSC)
- II. Patients with a negative or unobtainable CSS may be transported to a PSC if acute stroke ≤ 6 hours in duration is suspected by the Base Station based on any of the following "relative criteria":
 - Sudden and persistent alteration of consciousness
 - Sudden onset severe headache (especially in association with vomiting +/- systolic BP >200)
 - Severe and sudden loss of balance

These criteria are also outlined in the attachments and on the Base Station telemetry log sheets.

Base Station nurses should seek consultation with a Base Station physician for any situation in which there is a question as to the best receiving hospital for a patient with possible stroke symptoms.

- III. Patients who qualify for transport to a PSC by the criteria outlined in I. and II. should be transported to the closest PSC.

In the event the closest PSC is on ALS bypass, the "T + 5 minute" rule should be followed, i.e. if the transport time to the next closest PSC is greater than an additional 5 minutes, the patient should be transported to the PSC on ALS bypass (see Notification and Monitoring of Hospital Resource Limitation(s)/Ambulance Bypass Policy, A.3, VI.)

Patients with suspected acute stroke should not be transported to a PSC which has notified Region XI Base Stations regarding a temporary lack of CT scanners; they should instead be transported to the next closest PSC.

Patients with suspected acute stroke can be diverted to a closer non-PSC ER if the patient is deemed too unstable for the longer transport to a PSC (e.g. inability to oxygenate or ventilate the patient).

Attachments:

1. Summary of Field Triage Criteria
2. List of Primary Stroke Centers

Copyright 2013 Chicago EMS Medical Directors Consortium
Written: 3/10
Reviewed: 6/10; 5/11
Revised: 6/10
MDC Approval: 6/1/10
IDPH Approval: 11/24/10
Implementation: 3/1/11

FIELD TRIAGE CRITERIA

- 1. Patients with stroke symptoms ≤ 6 hours in duration and an abnormality in one of more items of the Cincinnati Stroke Scale (CSS) should be transported to a Primary Stroke Center (PSC)**
- 2. Patients with a negative or unobtainable CSS may be transported to a PSC if acute stroke ≤ 6 hours in duration is suspected by the Base Station based on any of the following "relative criteria":**
 - Sudden and persistent alteration of consciousness**
 - Sudden onset severe headache (especially in association with vomiting +/- systolic BP > 200)**
 - Severe and sudden loss of balance**